

# Regulated Activity relating to adults

**Important** - this chart does not apply to family arrangements and personal non-commercial arrangements (these are not covered by the CRB system) and should be read in conjunction with the full guidance from the Department for Health, available via [www.dh.gov.uk/health/files/2012/08/Regulated-Activity-adults-V2.pdf](http://www.dh.gov.uk/health/files/2012/08/Regulated-Activity-adults-V2.pdf)

Does the role involve any of the following activities?:

**1.** Providing health care either by or under the supervision of a health care professional

**2.** Assisting an adult with eating, drinking, toileting, washing, bathing, dressing, oral care, care of the skin, hair, nails or teaching someone to do one of these tasks

**3.** The provision of social work by a social care worker in connection with any health or social services

**4.** Assistance with cash, bills and/or shopping because of an adult's age, illness or disability

**5.** Assistance with the conduct of an adult's own affairs, e.g. enduring powers of attorney or deputies appointed under the Mental Health Act

**6.** Transporting an adult to or from their place of residence and a place where they have received or will receive health care, personal care or social care? (excludes taxi drivers)

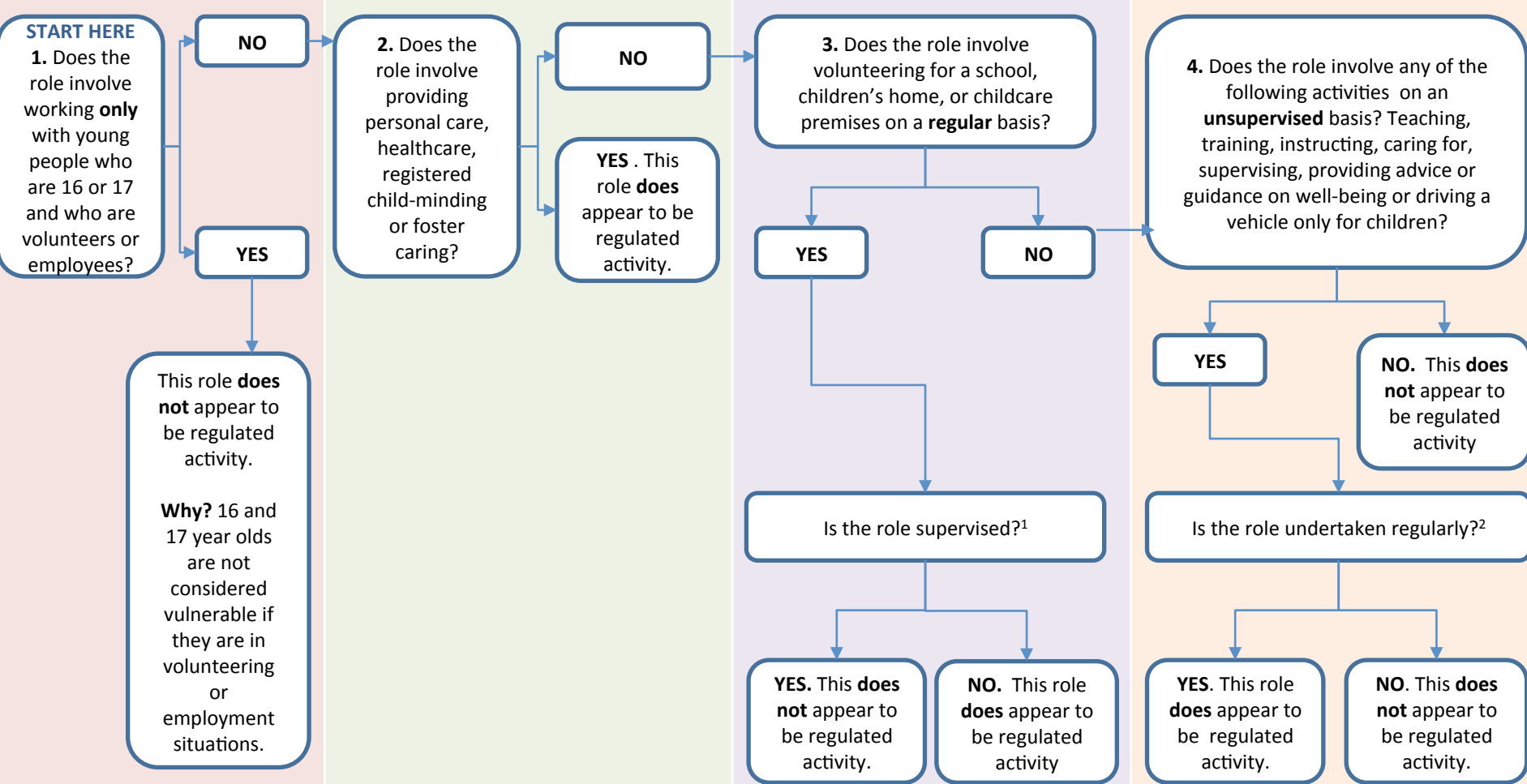
**YES.** The role **does** appear to be regulated activity.

**NO.** The role **does not** appear to be regulated activity

**Note** - this chart also applies to anyone who provides day-to-day management or supervision of persons involved in these activities

# Regulated Activity relating to children and young people

**Important** - this chart does not apply to family arrangements and personal non-commercial arrangements (these are not covered by the DBS system) and should be read in conjunction with the full guidance from the Department for Education, available via [www.education.gov.uk/childrenandyoungpeople/safeguardingchildren/a00209802/disclosure-barring](http://www.education.gov.uk/childrenandyoungpeople/safeguardingchildren/a00209802/disclosure-barring)



<sup>1</sup> Supervised means regular supervision by someone who themselves is in Regulated Activity. See the Department for Education’s guidance on supervision, available via [www.education.gov.uk/childrenandyoungpeople/safeguardingchildren/a00209802/disclosure-barring](http://www.education.gov.uk/childrenandyoungpeople/safeguardingchildren/a00209802/disclosure-barring)

<sup>2</sup> Regular means carried out by the same person frequently (once a week or more) or on four or more days in a 40-day period (or in some cases overnight).